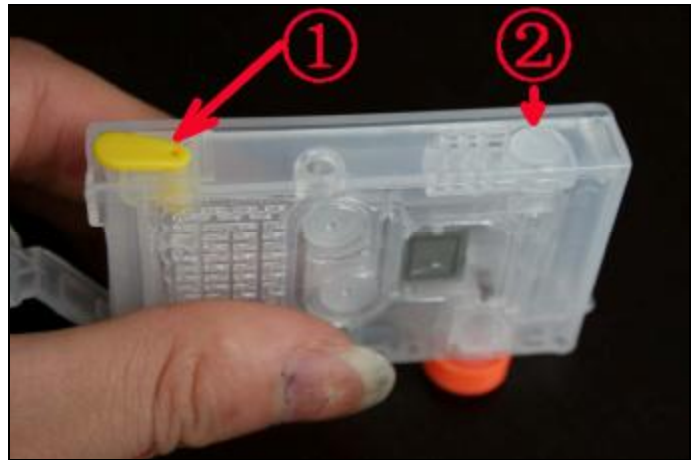


# Canon ip4200 Refill Cartridge Instruction

## Introduction:



Canon ip4200 refill cartridge & bottom cap & silicon piece

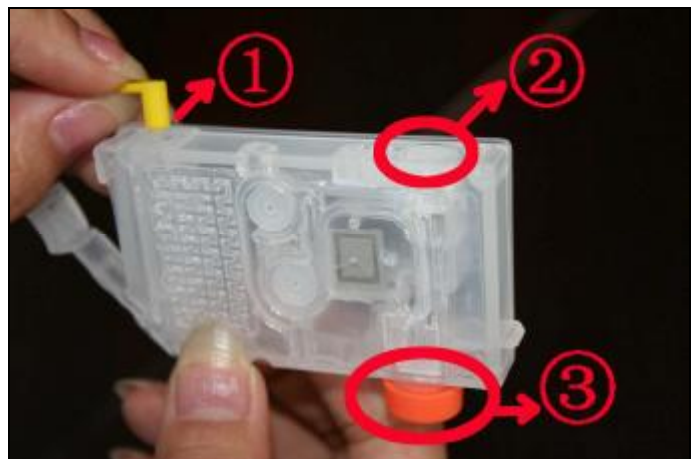


① is Air Hole (It is also used as Ink Filling Hole)  
② is Ink Filling Hole, but actually it is not used.

## Filling Ink:



Draw ink with the syringe.



Pull out the Rubber plug from ①. And keep the rubber plugs on ② & ③.



Use the syringe to draw some ink, and then insert the syringe into the cartridge



Draw the plunger and do not loose hand for about 10 seconds.



Then losing hand and the ink will be pressed into the cart.



If the cart is not filled, just repeat the steps for several more times.

## Change Chips:



Take out the original cartridge.



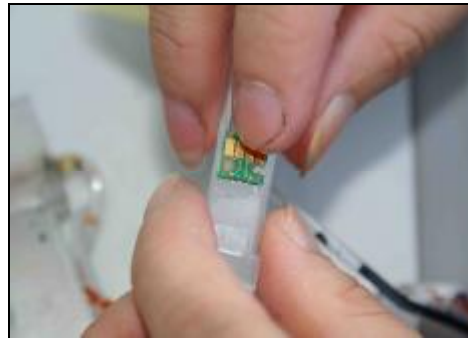
Use knife to cut the 2 points that fix the chip. And then remove the chip. Pls be careful when doing this.



Then the chip is removed.



Put glue at the same position of the refilling cartridge (at the 2 sides)

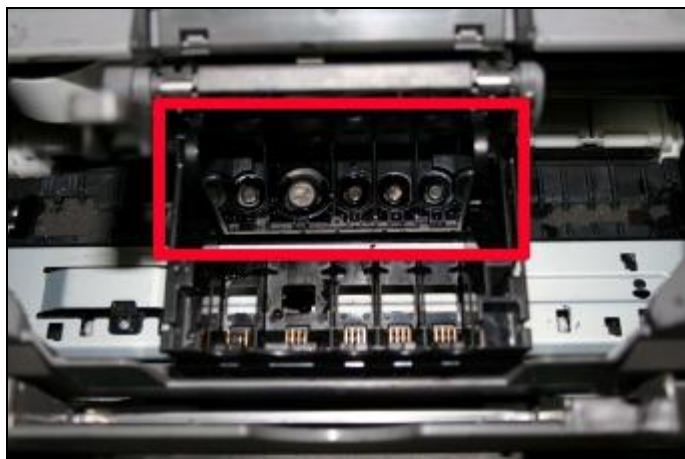


Stick the chips on the refilling cart (Pls note that the color should be correct. Do not mix the chips)

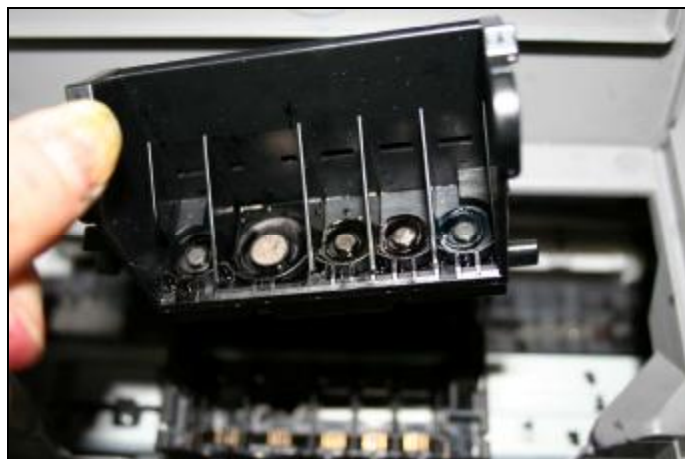


Repeat this with other cartridges.

## Change the Silicon Padding:



Take out the original carts, the part in Red Circle is the Printer Heads.



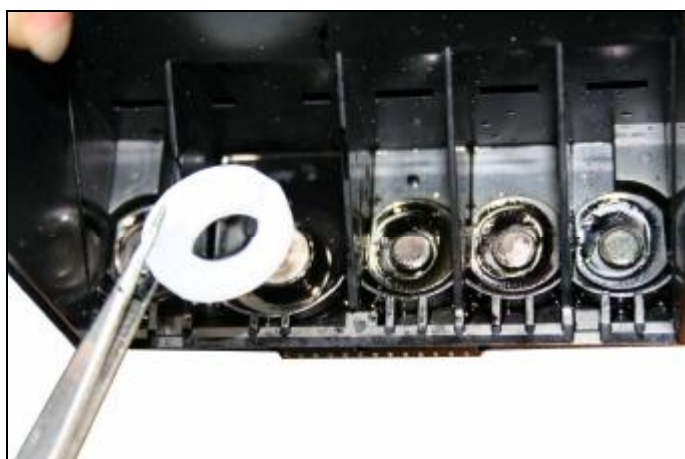
Take out the printer head with your hand.



About the printer heads, there are 5 silicon paddings.



Take out the old silicon paddings with a tweezer.



Change to use the new silicon paddings.



Let the side with groove attached to the printer head



## Printing:



Remove the cap from the ink filling hole.



Install the chip and then it can be used for printing.