

Continuous Ink Supply System
for
CANON PIXMA IP6000

Installation Instruction

For DP Prefilled Version

This Version of the Continuous Ink Flow System comes with Prefilled Cartridges and Auto Reset Chips. You just need to fill the Reservoir bottles and print! The whole operation is very easy. It's really an effective tool to save your money.

CIS for CANON PIXMA IP6000 Instruction

Thank you for purchasing DP Continuous Ink Supply System. We appreciate your support and will try our best to make your experience with our products a pleasant one. Printing has been a different experience ever since you installed DP Continuous Ink Supply system on your own printer. Just imagining being able to print without regard to the ink level in those expensive little cartridges.

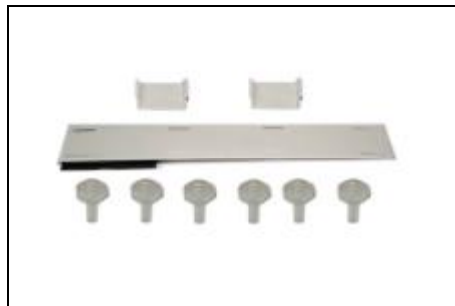
Please take your time installing DP Continuous Ink Supply system. Do not remove your old cartridge until you have the DP CIS system primed and ready to install (to prevent the drying of heads). In addition, make sure you are getting perfect nozzle checks before installing the DP CIS system. The DP CIS system won't be able to work properly if the nozzles are previously clogged.

Most people get a perfect nozzle check the first time after installing the DP Continuous Ink Supply system; others may need to run two or three cleaning cycles or let the printer sit for a while before they get the perfect results.

1、 General Guide:

1) Components

A、 CIS system	1 set
B、 Air filters	6pcs
C、 Support Arm	1 set
D、 Refill Kit	6 pcs
E、 Instruction CD	1pc



2) Opening box inspection

- a、 Check whether all the accessories are ready.
- b、 Check whether there's leakage of CIS System, whether some tubes have been separated from CISS. If there is, please kindly to contact the local dealer.
- C、 Check whether there is air space in the tube. If the length of air space is more than 20cm, please clean the printer head for 2 or 3 times before printing.

2、 Printer testing:

- 1) Check whether the printer is in normal condition, like mechanical status, lubrication status etc.
- 2) Print testing lines to ensure the printing head is good condition.
- 3) Print pictures to see whether the printing image is ok.

3、 Installation Procedures:

1) First step



Put the CISS at the left side of printer
And make sure the tube line does not twist



Take off the rubbers from ink tank's
Air-hole.



Put the Air-filter into the Air-hole

2) Remove Original Cartridges



Pls turn on power.



Open the cover, the cartridge carriage will
move automatically to "Change Cartridge
Place". Then take off original Cartridges.

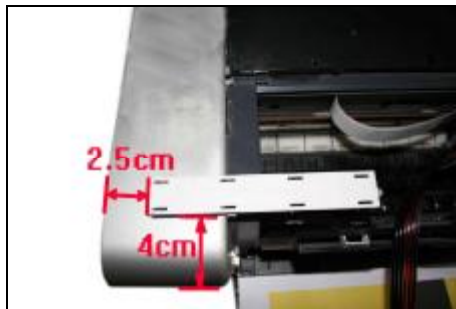


Turn off the printer and unplug it.

3) Install CISS



Take off the CIS cartridge's bottom cap and
the cartridges into cartridge carriage.



Stick support arm 2.5cm distance from
left edge, 4cm distance from bottom side



Clip the tube like the part in red circle.



Clip the tube on the other side of the support
arm as shown in the picture.



Adjust the tube line, make sure cartridge
carriage can move to the both sides and the
tube line can come out through the bottom of
the cartridge like the position in red circle.



Move the cartridge carriage to the right side
of printer. Check if there is any problem
when moving.



Too long is no good.

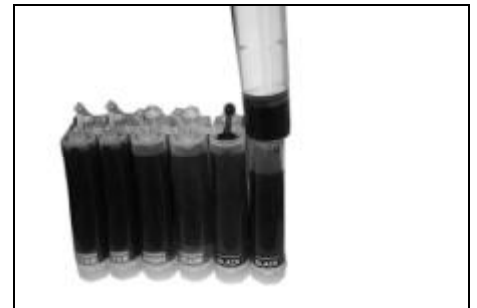


Twisted line is no good.



Install well.

4. Refill Ink



Please pay attention to the ink level in the reservoirs; if the ink level is below 1CM as the picture shown above, please use refill kits to fill ink into Reservoir bottles. Carefully pull out the rubber plugs from the ink refill holes (There is possibility of ink spattering. Pls be careful.) Refill ink according to the colors. Then re-cap the rubber. **(Please keep the printer and the reservoir bottles at the same horizontal line during the process of refilling ink.)**

5. Attention for Maintenance:

Take out the CISS including the inner cartridges and other components. Then remove support arm from printer, and re-install original cartridges. Please inquire local dealer before sending to maintenance.

6. Notice:

1. Please don't take out cartridge at random after installing the CIS system. Keep the reservoir bottles on the same level with the printer.
2. Try to keep at least 1/2 inch of ink in the bottles.
3. Don't place the Reservoir Bottles too much higher or lower than the printer.
4. Suggested using in a dry place between 15 and 35 degree. Avoid exposure to direct sunlight.
5. Don't reverse or lean the continuous ink supply systems during shipping. Please make sure all the ink filling holes and ventilation holes are closed tightly during transportation. Otherwise, the ink may leak.
6. Don't sway the cartridge frequently. It may cause ink leakage.
7. Don't pull out the connector of cartridge and don't tear off adhesive tape at the bottom of cartridge.

7. Warning:

1. Not drinkable; keep it out reach of children.
2. Avoid exposure to direct sunshine and don't keep it in high or freezing temperature.
3. Avoid collision and fallen down.