

## CIS for Epson CX5500 Instruction

Thank you for purchasing AT Continuous Ink Supply System. We appreciate your support and will try our best to make your experience with our products a pleasant one. Printing has been a different experience ever since you installed AT Continuous Ink Supply system on your own printer. Just imagining being able to print without regard to the ink level in those expensive little cartridges.

Please take your time installing AT Continuous Ink Supply system. Do not remove your old cartridge until you have the AT CIS system primed and ready to install (to prevent the drying of heads). In addition, make sure you are getting perfect nozzle checks before installing the AT CIS system. The AT CIS system won't be able to work properly if the nozzles are previously clogged.

Most people get a perfect nozzle check the first time after installing the AT Continuous Ink Supply system; others may need to run two or three cleaning cycles or let the printer sit for a while before they get the perfect results.

### 1. General Guide:

#### 1) Components

- |                   |       |
|-------------------|-------|
| A. CIS system     | 1 set |
| B. Air filters    | 4 pcs |
| C. Support Arm    | 1 set |
| D. Refill Kit     | 4 pcs |
| E. Instruction CD | 1 pc  |



#### 2) Opening box inspection

- Check whether all the accessories are ready.
- Check whether there's the leakage of the CISS, whether some tubes have been separated from the CISS, whether there are air bubbles in the tube (If there exists more than 20CM air space, please kindly to contact with the local dealer)

### 2. Printer testing:

- Check whether the printer is in normal condition, like mechanical status, lubrication status etc.
- Print testing lines to ensure the printing head is good condition.
- Print pictures to see whether the printing image is ok.

### 3. Installation Procedure

## Step 1: Preparation



Put the CISS on the right side of the printer, and place all the tubes at correct position.



Pull out the small rubber plug from the air hole as picture shown above.



Place 4pcs of air filters into air holes,

## Step 2: Take out the original cartridges



Press the button to replace cartridges



Move the carriage to the suitable place.



Pull out the power cord, then you can move the carriage.

## Step 3: Remove the carriage cover



Remove the clip of the cartridge, as the above red rectangle shown.



Use a screwdriver to insert into the joint slightly. Then remove the cartridge cover directly.



Take out the original carts.



Ready to install CIS

## Step 4: Install Cartridges



Move the carriage to the left-side



Place the CIS cartridge and pipeline through the printer cover as above picture shown



Then move the carriage back to the original place.



Insert the CISS cartridge in the same way as above picture shown

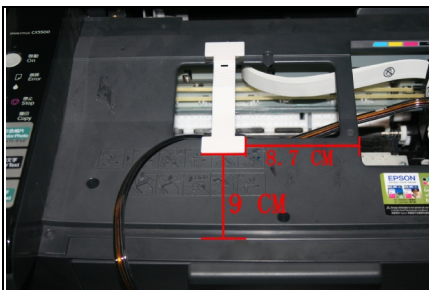


Press those cartridges to make sure it is well installed.

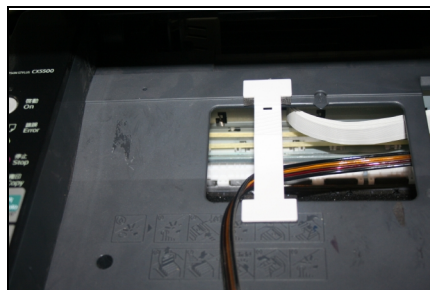


As the red rectangle shown, if all the cartridges are well installed, you can hear some sound.

### Step 5: Fix the Support Arm



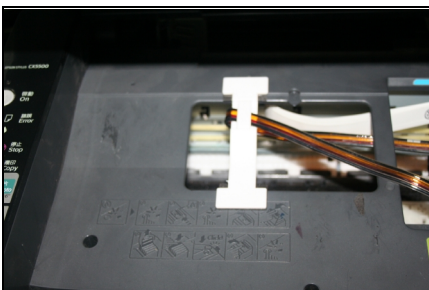
Stick the support arm in the place as the picture shows.



Then stick another support arm over the first one.



Stick the short support arm parallelly as the above picture shows.



Clip the tube



Clip the tubing.



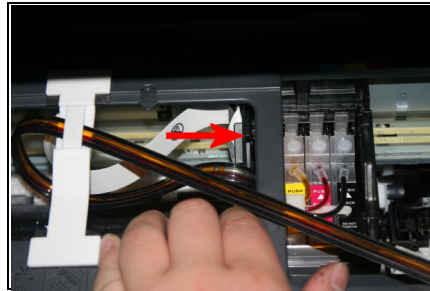
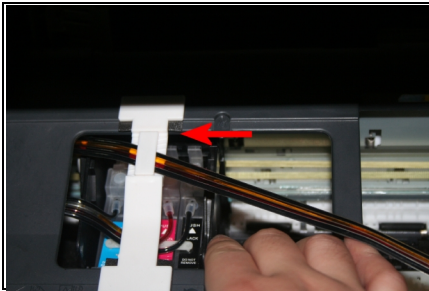
Make sure the tubing pass through the flute.





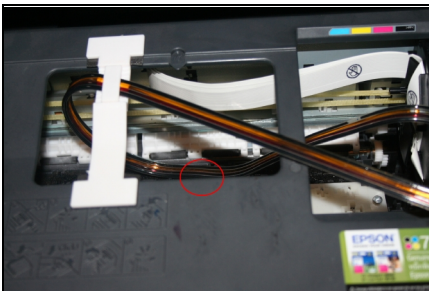
Installation is finished.

### Step 6: Adjust tube line



Move the carriage to the leftmost and rightmost to make sure that the tube can be straight.

Installation is finished.



Too long



Twist

### Step 7:

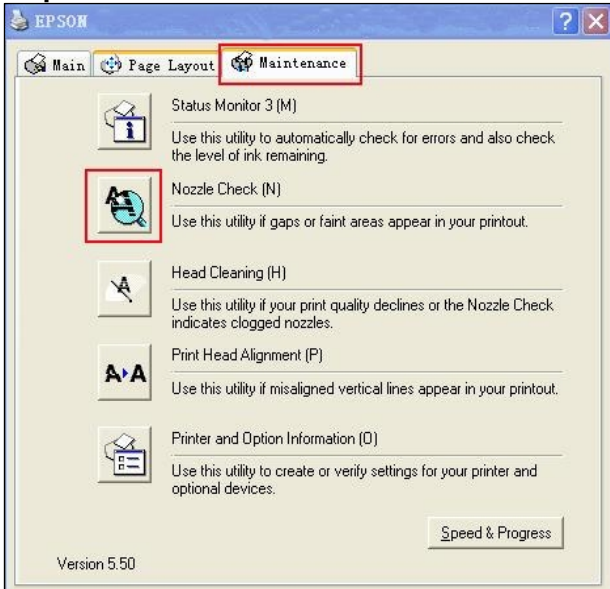


Connect the power cord.

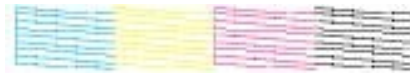


Turn on the power and check whether the printer can work.

## Step 8: Check the nozzle

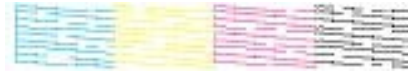


Enter Checking Nozzle Panel



Nozzle is ok

Print test lines. If it is OK, then you can begin using.



Broken Lines

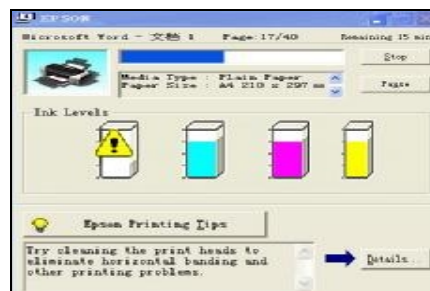
If there is broken lines, then pls clean the printer head.

Broken lines may be caused by air entering the nozzles. If there is still some broken lines after cleaning printer head repeatedly, especially for single color, then you can leave the printer for about 1 hour. Then the broken lines may disappear. If there is still such problem, then pls contact local dealer.

## 4. Chip Reset



If there is light flashing during printing,



And if there is panel reminding you to change the cartridge, then pls turn off the printer and re-start it after 1 minute.



The chip is reset.

Besides, you can reset the ink by pressing the ink-lacking light three times. The procedure is: First, press the button and the cartridge-car moves out and the ink-lacking cartridges are indicated; second, press the button again, the cartridge-car move to the cartridge-changing place. Thirdly, press the button once again after several seconds. Then the printer will default that you change the new cartridges.

Note: If your printer is produced after June 2007, you have to remove the cartridge and install again to reset the Chips.

## 5. Refill in Ink



Please pay attention to the ink level in the reservoirs; if the ink level is below 1CM as the picture shown above, please use refill kits to fill ink into Reservoir bottles. Carefully pull out the rubber plugs from the ink refill holes (There is possibility of ink spattering. Pls be careful.) Refill ink according to the colors. Then re-cap the rubber. (Please keep the printer and the reservoir bottles at the same horizontal line during the process of refilling ink.)

## 6. Attention for Maintenance:

Take out the CISS including the inner cartridges and other components. Then remove support arm from printer, and re-install original cartridges. Please inquire local dealer before sending to maintenance.

## 7. Notice:

1. Please don't take out cartridge at random after installing the CIS system. Keep the reservoir bottles on the same level with the printer.
2. Try to keep at least 1/2 inch of ink in the bottles.
3. Don't place the Reservoir Bottles too much higher or lower than the printer.
4. Suggested using in a dry place between 15 and 35 degree. Avoid exposure to direct sunlight.
5. Don't reverse or lean the continuous ink supply systems during shipping. Please make sure all the ink filling holes and ventilation holes are closed tightly during transportation. Otherwise, the ink may leak.
6. Don't sway the cartridge frequently. It may cause ink leakage.
7. Don't pull out the connector of cartridge and don't tear off adhesive tape at the bottom of cartridge.

## 8. Warning:

1. Not drinkable; keep it out reach of children.
2. Avoid exposure to direct sunshine and don't keep it in high or freezing temperature.
3. Avoid collision and fallen down.